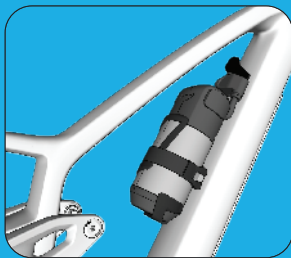


TREK



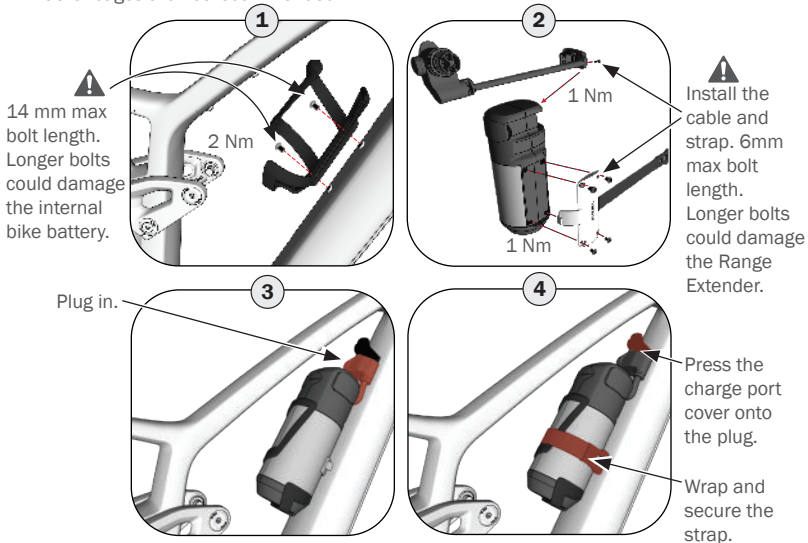
Range Extender Battery

About this guide

This quick start guide explains how to install the TQ Range Extender on your Trek bicycle. Please also read the TQ Range Extender manual, found in the Range Extender box and online at tq-ebike.com/de/support/manuals. The TQ manual contains additional important safety information and technical specifications for the Range Extender.

Installation

- ⚠** Your Range Extender is intended for use with a Trek side-load water bottle cage. Other cages are not recommended.



Battery Use and Care

A few important things to remember:

- Charge the Range Extender to 100% before first use.
- Only charge the Range Extender with a TQ charger designed for use with the Range Extender.
- Only charge in a dry, indoor location.
- Use, charge and store the Range Extender within the following temperature ranges. Using or charging outside of this range may affect performance or may damage the Range Extender.



Charging range: 0 °C – 40 °C

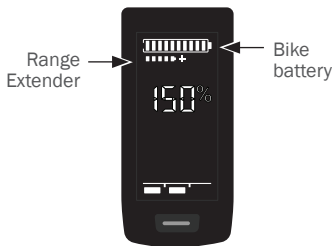
Operating range: -10 °C – 60 °C

Storage range: 10 °C – 20 °C

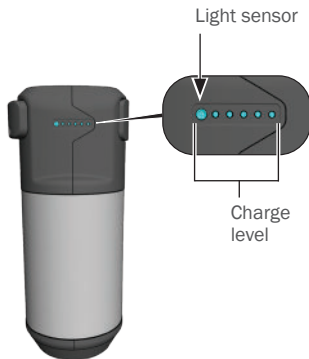
- After charging, disconnect the charger from the outlet and from the Range Extender.
- Close the charge port cover on the bike to protect the charging socket.
- Do not store the Range Extender in direct sunlight.
- Do not store the Range Extender near heat sources or other easily flammable materials.
- Store the Range Extender only in rooms equipped with smoke detectors.
- Do not store the Range Extender plugged into the charger.
- Charge the Range Extender to approximately 30% to 60% before storing it.
- Check the Range Extender every 6 months and recharge it to approx. 30% to 60%.

Monitor the battery charge

The e-bike will drain the Ranger Extender first, then draw power from the internal bike battery.



Internal battery + Range Extender



Range Extender only

Charge the battery

The Range Extender can be charged while connected to the e-bike or separately.

Range extender connected to the bike battery

⚠ WARNING: If the Range Extender is attached to the bike while charging, for example in the water bottle cage, the Range Extender **MUST** also be plugged in to the charge port on the bike to disable the drive system while charging. Failure to do so could cause damage to the bike or personal injury.



Range extender only



⚠ Shipping and transporting

- The transport of lithium batteries, such as the Range Extender, is subject to country-specific laws and regulations. Become familiar with the respective regional regulations and observe them during transport.
- Follow the special requirements for packaging and labelling a battery for shipment.
- Remove the Range Extender from the bike when transporting the bike on a vehicle-mounted rack.
- Do not leave the Range Extender (on the bike or off) in your vehicle in hot weather. The temperature inside could exceed 60 °C. Extreme heat could damage your Range Extender or cause it to catch fire.
- Do not allow the Range Extender to become submersed in water or other liquids.

⚠ Cleaning

- Only clean the Range Extender with a soft, damp cloth.
- Never immerse the Range Extender in water to clean it.
- Never clean the Range Extender with a water jet.

⚠ Disposing



The Range Extender must not be disposed of in your normal refuse stream. When possible, choose to recycle your Range Extender. Consult your local bike shop for recycling or disposal information.

TREK

© 2022 Trek Bicycle Corporation Rev 1